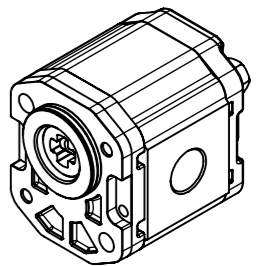
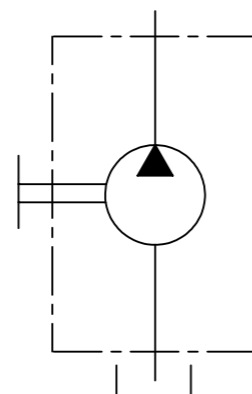


| | | | |
|---|-------------------|--------------------|-----------------------------|
| A | Mandata Output | G 1/2 (16mm depth) | Tappo plastica Plastic plug |
| S | Aspirazione Input | G 3/4 (19mm depth) | Tappo plastica Plastic plug |

| | |
|-----------------------|---|
| HPL48672PAUNB04R05 | R05KIT GUARNIZIONI POMPA BIL.3 GR.2 NBR (R) SEALS KIT GROUP 2 NBR PUMP |
| HPL2500222Z1R05 | R05 GIUNTO GR2 DENTE FRONT. Z BCX BROC. R05 COUPLING GR2 Z BCX |
| CODICE KIT - KIT CODE | COMPONENTI - ITEMS |



| PUMP DATA | |
|--|---|
| Cilindrata-Displacement | 11[cc]-0,67[in3] |
| Rotazione-Rotation | sinistra-counterclockwise |
| Guarnizioni-Seal type | NBR |
| Temperatura d'esercizio-Operating temperature | -20...+85 [°C] |
| Classe di contaminazione richiesta Required contamination class | ISO4406 20/18/15 (NAS1638-9) or better |
| Press.max continua-Max continuous press. | 230[bar] 3336[psi] |
| Coppia max-Max torque | 70 [Nm] |



| | | | | | | |
|---|-------------------------------------|-------------------------|---------------------------------------|--|----------------------|---|
| DERIVATO DA / DERIVED FROM | FOGLIO N. / SHEET N. 1 / 1 | | DISEGNATO / DESIGNED BY L. Ghesini | | | |
| SOSTITUISCE IL / IT REPLACED | COMUNICAZIONE / NOTICE N. M20588 | PESO (Kg) / WEIGHT (Kg) | DATA / DATE 14-06-2019 | | | SCALA / SCALE 1:3 |
| SOSTITUITO DAL / REPLACED FROM | NOTE / NOTES | | | | CODICE / PART NUMBER | REV. |
| DESCRIZIONE POMPA HPLPA211SRZG6G4B(NO ST-FL.X MULTI) | | | | HPLPA211SRZG6G4B00 | | 0 |
| DESCRIPTION PUMP HPLPA211SRZG6G4B(NO ST-FL.X MULTI) | | | | HPLPA211SRZG6G4B00 | | 0 |
| REPRODUCTION NOT PERMITTED ALL RIGHT RESERVED | | | | TOUTE REPRODUCTION NON AUTORISEE EST INTERDITE | | VIETATE LE RIPRODUZIONI NON AUTORIZZATE |